

# NORTHPOINTE 6TH ADDITION

CITY OF LINO LAKES  
COUNTY OF ANOKA  
SEC. 25, TWP. 31, RGE. 22

KNOW ALL PERSONS BY THESE PRESENTS: That Eternity Homes, LLC, a Minnesota limited liability company, owner of the following described property:

Outlot D, NORTHPOINTE 5TH ADDITION, according to the recorded plat thereof, Anoka County, Minnesota.

Has caused the same to be surveyed and platted as NORTHPOINTE 6TH ADDITION and does hereby dedicate to the public for public use the public way and the drainage and utility easements as shown on this plat.

In witness whereof said Eternity Homes, LLC, a Minnesota limited liability company, has caused these presents to be signed by its proper officer this \_\_\_\_ day of \_\_\_\_\_, 20\_\_\_\_.

ETERNITY HOMES, LLC

Patrick Flynn, President

STATE OF \_\_\_\_\_  
COUNTY OF \_\_\_\_\_

This instrument was acknowledged before me on \_\_\_\_\_ by Patrick Flynn, President of Eternity Homes, LLC, a Minnesota limited liability company, on behalf of the company.

Notary Public, \_\_\_\_\_  
My commission expires \_\_\_\_\_

I, Thomas R. Balluff do hereby certify that this plat was prepared by me or under my direct supervision; that I am a duly Licensed Land Surveyor in the State of Minnesota; that this plat is a correct representation of the boundary survey; that all mathematical data and labels are correctly designated on this plat; that all monuments depicted on this plat have been, or will be correctly set within one year; that all water boundaries and wet lands, as defined in Minnesota Statutes, Section 505.01, Subd. 3, as of the date of this certificate are shown and labeled on this plat; and all public ways are shown and labeled on this plat.

Dated this \_\_\_\_ day of \_\_\_\_\_, 20\_\_\_\_.

Thomas R. Balluff, Licensed Land Surveyor  
Minnesota License No. 40361

STATE OF \_\_\_\_\_  
COUNTY OF \_\_\_\_\_

This instrument was acknowledged before me on \_\_\_\_\_ by Thomas R. Balluff.

Notary Public, \_\_\_\_\_  
My commission expires \_\_\_\_\_

CITY COUNCIL, CITY OF LINO LAKES, MINNESOTA

This plat of NORTHPOINTE 6TH ADDITION was approved and accepted by the City Council of the City of Lino Lakes, Minnesota at a regular meeting thereof held this \_\_\_\_ day of \_\_\_\_\_, 20\_\_\_\_, and said plat is in compliance with the provisions of Minnesota Statutes, Section 505.03, Subd. 2.

CITY COUNCIL, CITY OF LINO LAKES, MINNESOTA

By: \_\_\_\_\_, Mayor By: \_\_\_\_\_, Clerk

COUNTY SURVEYOR

I hereby certify that in accordance with Minnesota Statutes, Section 505.021, Subd. 11, this plat has been reviewed and approved this \_\_\_\_ day of \_\_\_\_\_, 20\_\_\_\_.

By: \_\_\_\_\_  
Larry D. Hoium  
Anoka County Surveyor

COUNTY AUDITOR/TREASURER

Pursuant to Minnesota Statutes, Section 505.021, Subd. 9, taxes payable in the year 20\_\_\_\_ on the land hereinbefore described have been paid. Also, pursuant to Minnesota Statutes, Section 272.12, there are no delinquent taxes and transfer entered this \_\_\_\_ day of \_\_\_\_\_, 20\_\_\_\_.

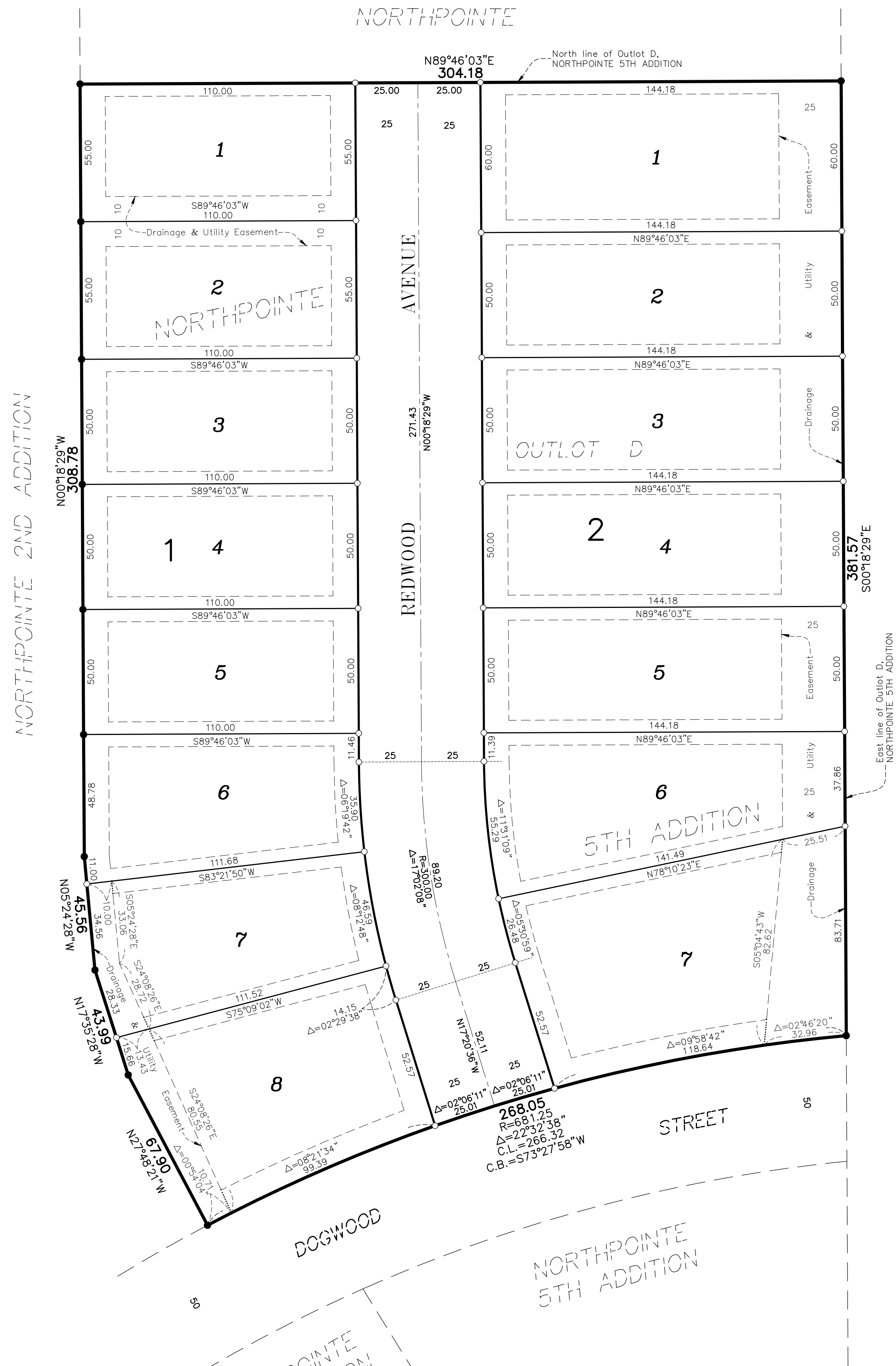
Property Tax Administrator  
By \_\_\_\_\_, Deputy

COUNTY RECORDER/REGISTRAR OF TITLES

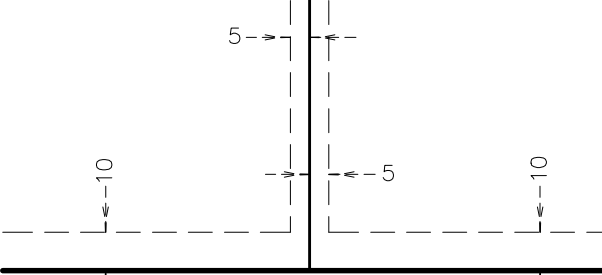
County of Anoka, State of Minnesota

I hereby certify that this plat of NORTHPOINTE 6TH ADDITION was filed in the office of the County Recorder/Registrar of Titles for public record on this \_\_\_\_ day of \_\_\_\_\_, 20\_\_\_\_, at \_\_\_\_ o'clock \_\_\_\_M. and was duly recorded in Book \_\_\_\_\_ Page \_\_\_\_\_, as Document Number \_\_\_\_\_.

County Recorder/Registrar of Titles  
By \_\_\_\_\_, Deputy



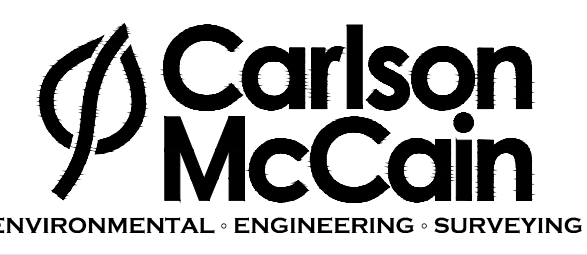
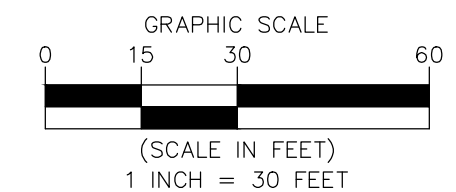
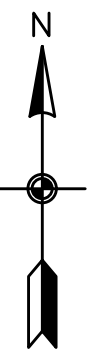
DRAINAGE AND UTILITY EASEMENTS ARE SHOWN THUS: (NOT TO SCALE)



being 5 feet in width, and adjoining side lot lines, and 10 feet in width and adjoining right of way lines and rear lot lines unless otherwise shown on this plat.

- Denotes 5/8 inch by 14 inch rebar set or to be set within one year of recording of this plat and marked with license number 40361
- Denotes Found Iron Monument, marked with license number 40361 unless otherwise noted

For the purposes of this plat, the North line of Outlot D, NORTHPOINTE 5TH ADDITION is assumed to have a bearing of North 89 degrees 46 minutes 03 seconds East.



NORTHPOINTE 3RD ADDITION